

ALEX J WOOD



The Kraken

Patinated bronze

27W x 26D x 29H CM

2019

Private Collection

WWW.ALEXJWOOD.CO.UK



Celestial

Patinated verdigris bronze

200 x 240 x 125 CM

2016

Angel Gate, 326 City Road, Islington, London

The Picton Art Prize

(Photo courtesy of Jasper Fry)





'Celestial' by Alex Wood is a sculpture where at first you don't know what to expect. My initial thoughts of the venue comprising a complex of office spaces albeit it very pleasant might limit the imagination. This was certainly not the case with 'Celestial' which literally causes the spirits to soar.

I particularly admire the organic quality which is akin to a crumpled Autumn leaf in delicacy but has the fluidity the beautiful bronze patina offers as it rises from the plinth skywards. It works so well in the space because of the relative nearness of the buildings which acts as a backdrop but in observing 'Celestial' the eye is drawn along and up into the sky above: perfect.

Elizabeth Grant BA (Hons), MSc
Creative Consultant & Trustee Director at The Foundation for Essex Arts



Studio Shots - Celestial



Scylla and Charybdis
Patinated bronze
36W x 37H x 27D CM
2020







Out of this World
(Bus No. 9 to Aldwych)
Patinated bronze and resin
32W x 58H x 26D CM
2015



The Palm After the Storm

Patinated bronze

52H x 26W x 22D CM

2020



2020: A Space Oddity

Patinated bronze, cast from 3D printed model

26H x 17H x 16D CM

2020



Blow Out!

Patinated bronze
83H x 24W x 29D CM
2019

Arabesque

Patinated bronze
19H x 23W x 24D CM
2019



Mercury Rising

Patinated bronze

25H x 20H x 15D CM

2019





The Pier
Patinated bronze
56W x 40H x 31D CM
2018



Piña Colada Palm

Patinated bronze, 25H x 15W x 13D CM, 2020



The Big One

Patinated bronze, 79H x 34W x 33D CM, 2020

The Kraken

Patinated bronze

27W x 26D x 29H CM

2019

Private Collection



Fly Me to the Moon

Patinated bronze

24W x 58H x 21D CM

2014

University of the Arts London Collection





The Drone
Patinated bronze
21W x 19D x 27H CM
2019



Opposite

Blow Out!

Watercolour and ink on paper

30W x 40H CM

2019

Private Collection

Sold at Christies London with all proceeds benefitting Terrence Higgins Trust

Inspired by the bronze sculpture of the same name, 'Blow Out' captures the unleashed raw energy of an oil strike. Highly pigmented watercolours and inks erupt exuberantly in a plume of 'black gold,' releasing spontaneous runs of colour across the page.

"Suspending the moment enables me to create pause and to invite the spectator to venture beyond the confines of voyeurism and fleeting primal thrills. In this more reflective space, 'Blow Out' encourages engagement with concepts of awareness and responsibility within the frame of individual and collective action."



Blow Out!

Patinated bronze maquette, 40 x 15 x 13 CM, 2020

Aurora
Patinated bronze
19H x 23W x 24D CM, 2019





The Rig
Patinated bronze
30W x 40H x 56D CM
2018



Zephyr

Patinated bronze

35H x 45D x 22W CM

2019

Private Collection

Apollo 11

Patinated bronze and gilded rocket

55H x 35D x 40W CM

2014





R101

Patinated bronze and gilded silver paper

70W x 95H x 30D CM

2013

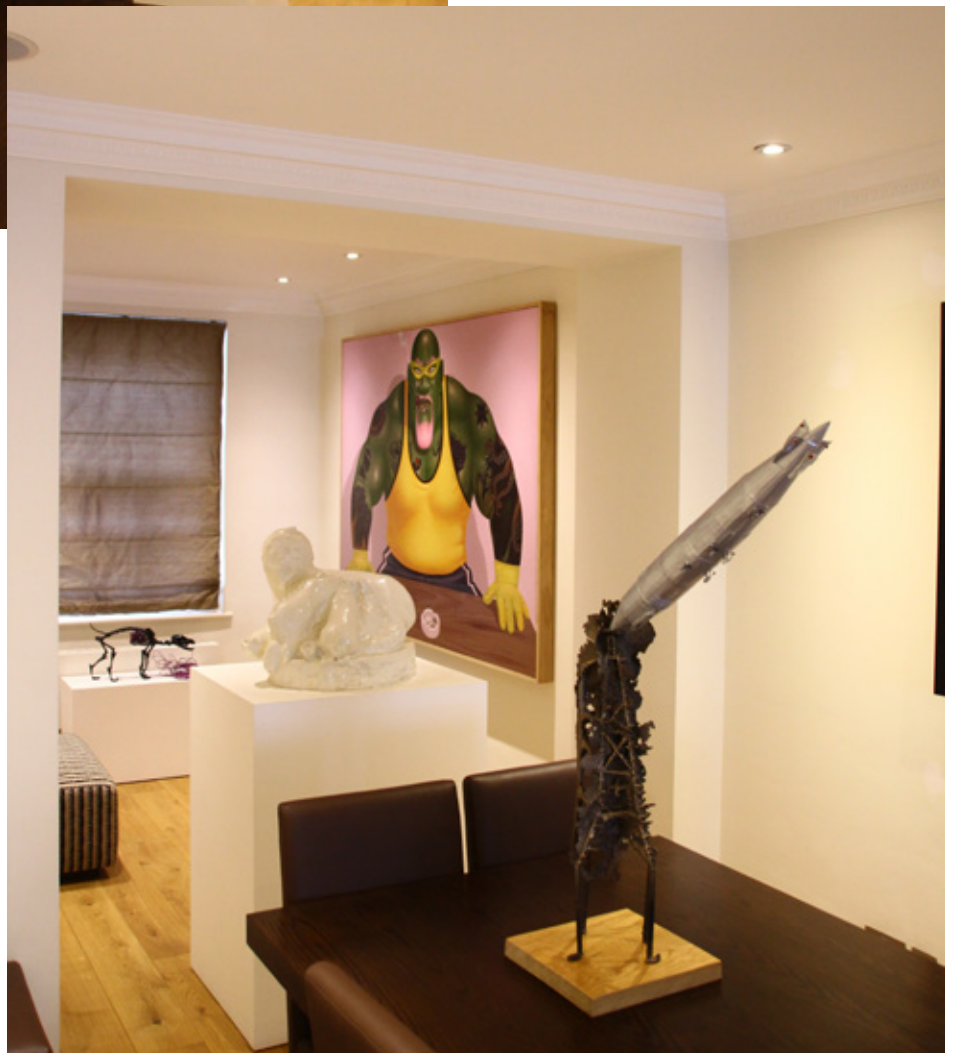
The Patrick & Kelly Lynch Collection



**Installation View of 'R101'
alongside I Nyoman Masriadi**

R101

Patinated bronze and gilded
silver paper
70W x 95H x 30D CM
2013



Alex Wood might be the unholy reincarnation of Heath Robinson, for he sets his wild imagination and crazy obsession with flight into the heaviest of artistic materials: BRONZE

A silvered paper zeppelin crashes into a bronze tower in 'R101' (sadly the original British R101 crashed on its maiden flight in 1930 killing almost everyone on board), a bronze hot air balloon cannot take off and lift its wicker basket in 'We Have Lift Off!' While in a new work 'Fly Me to the Moon' a rather wrecked 1950's version of what a rocket should be, looks like it could never lift off either. A larger work that deal with flight or the lack of it 'Taking Off', looks like it came out of someone's father-in-law's garden shed. It is made from what appears to be found timber and bicycle wheels but also has bronze elements just to add a bit more visual and historical weight. A silver airplane model delicately wedged into a mass of bronze in 'Grounded', neither the model or the original are going nowhere and his 'Ferris Wheel' is wonderfully mad, a work his spiritual grandfather would have been proud of – ceramic drinking cups are attached to a motorised bicycle wheel and a mouse could easily topple the complex structure.

It is the heady joy of these objects that brings a smile to the face of even the dourest viewer. That so many of his works are translated into such a staid material (bronze) makes the viewer realise how considered, how constructed, how sophisticated they are. For those unfamiliar with the process, bronze casting is a labour of love and the significant word is labor. These works at first look thrown together, jokey, but on inspection we see they are much more complex and they have been hard fought struggles to come into being and that makes the smile grow even a bit wider.

Dr. Michael Petry, Director of the Museum of Contemporary Art London



Taking Off!

Wood, metal, motors and rope with gilding
Life size Wright Bros Bi Plane, 2013



Antares

Patinated bronze
11.5W x 51H x 11.5D CM
2015

Two Projectiles

Patinated verdigris bronze
22W x 41H x 21D CM
2015



Sputnik

Bronze with Yves Klein blue patina
18W x 41H x 15D CM
2018



Launchpad 39B
Patinated bronze
48W x 35H x 24D CM
2017



Revolutionary
Patinated verdigris bronze
16W x 14H x 15D CM
2018





'Space X', 'NASA' and 'Virgin Galactic'

Bronze

11W x 8W x 7D CM

2019



The SA Andrée Balloon

Patinated bronze

44W x 18H x 30D CM

2017



Grounded

Patinated bronze and gild-
ed plane

28W x 38H x 18D CM

2014

Two Projectiles
Patinated verdigris bronze
22W x 41H x 21D CM
2015





Antares

Patinated bronze
11.5W x 51H x 11.5D CM
2015

Two Projectiles

Patinated verdigris bronze
22W x 41H x 21D CM
2015



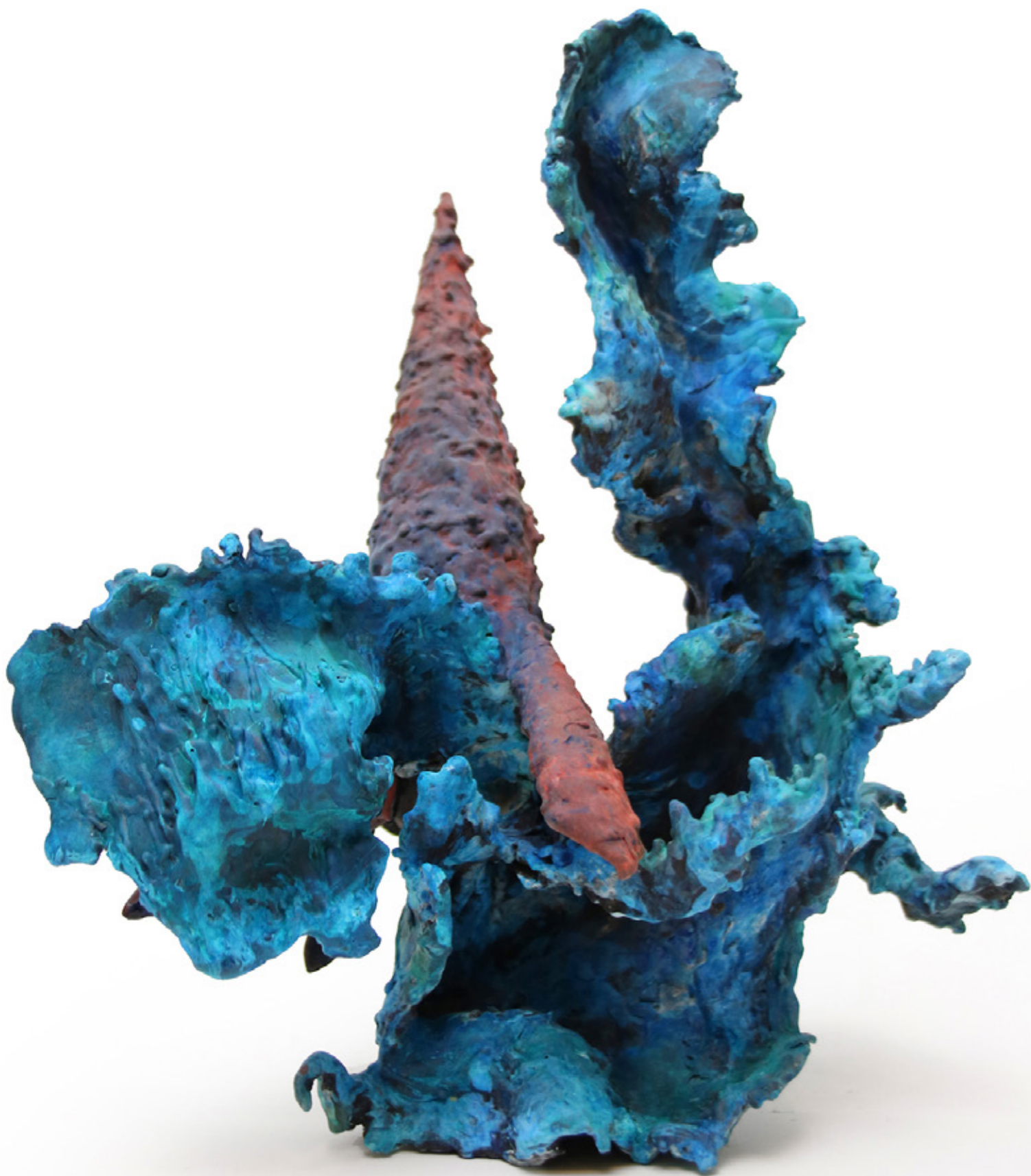
Discovery

Bronze and card with gilding
90W x 75H x 80D CM
2014



The Tower
Patinated bronze
35H x 45D x 22W CM
2019

Echostar Saturn V, Plumes
Patinated prussian blue bronze
39H x 32W x 25D CM
2017





Installation Views of 'Air: Visualising the Invisible in British Art 1768-2017'

Royal West of England Academy, Bristol, 2017

Curated by Christiana Payne, Stephen Jacobson RWA and Gemma Brace

(Photos courtesy of Alice Hendy)





Kinkaku-Ji (The Golden Pavillion)

Patinated bronze

18W x 16H x 18D CM

2013

Private Collection



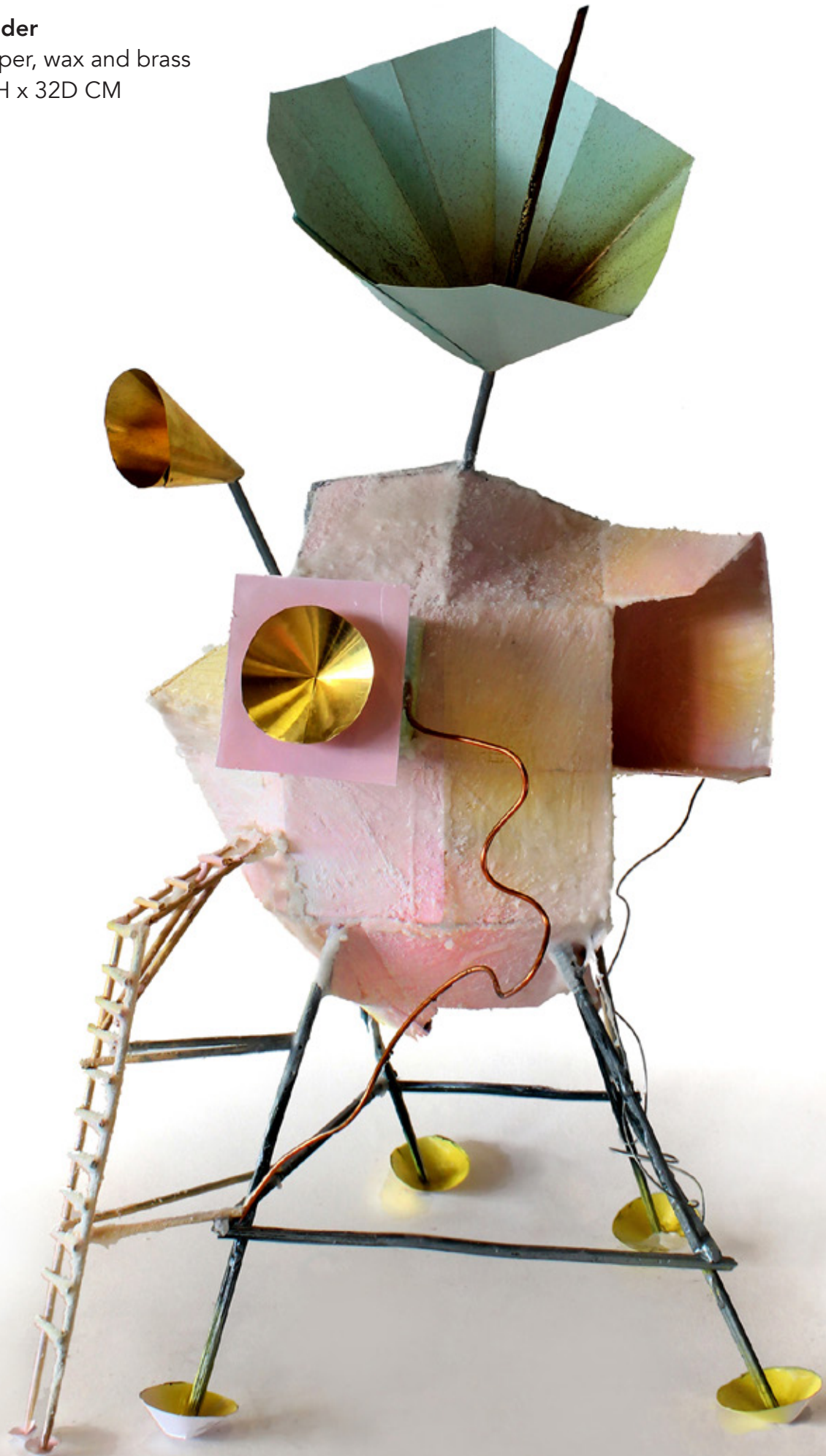


**We Have Lift Off!
(The Montgolfier)**

Patinated bronze
18W x 48H x 18D CM
2013
Private Collection

Lunar Lander

Card, copper, wax and brass
30W x 52H x 32D CM
2015





Suspension

Bronze, card, brass and copper
24W x 33H x 12D CM
2015



**Installation Views at
Library Members Club**
112 St Martins Lane, London
(Photos G. Baldari)

Blimp
Gilded papier-mâché & Tower Bridge
2014



Suspension
Bronze, card, brass and copper
24W x 33H x 12D CM
2015

**Installation Views at
Library Members Club**
112 St Martins Lane, London
(Photos G. Baldari)

The Red Balloon

Paper, card, string, windmill, wood
and bronze nugget
42W X 58H X 30D CM
2015

Two Projectiles

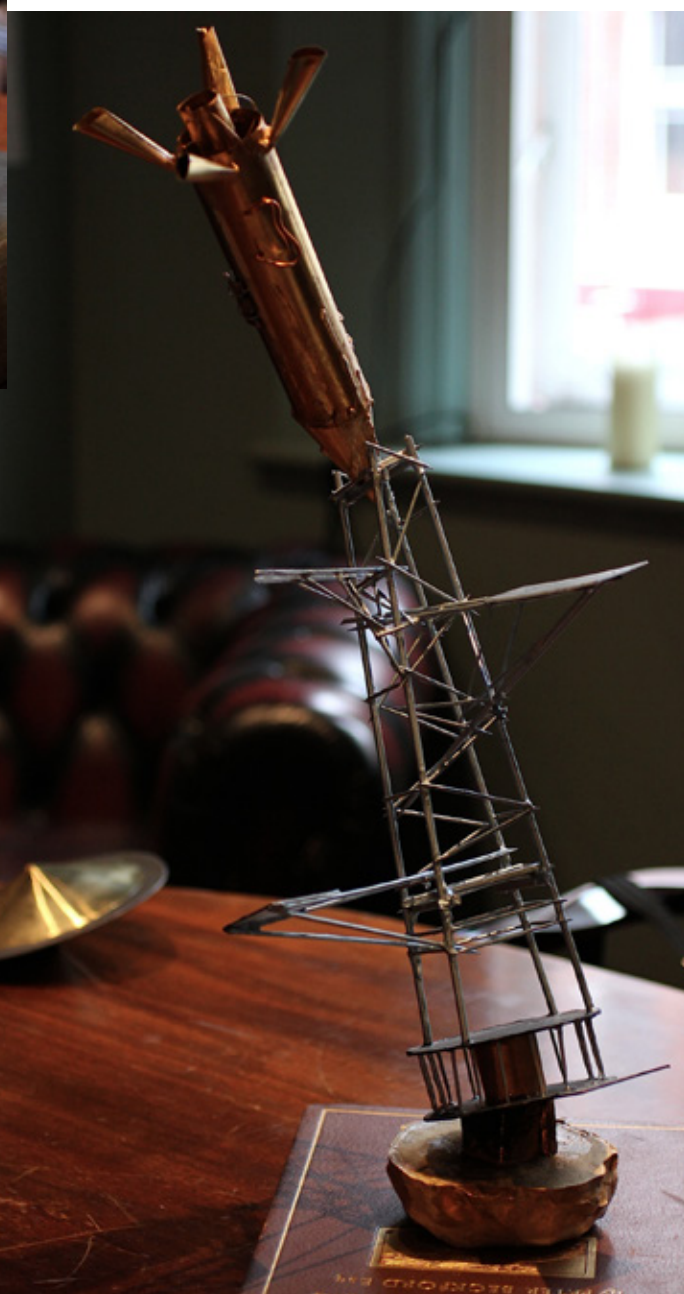
Patinated verdigris bronze
22W x 41H x 21D CM
2015

Saucer

Brass and lead
15W X 6H X 15D CM
2015

UXB

Brass, bronze powder, cocktail sticks &
denta-stone
34W x 66H x 26D CM
2015





UXB

Brass, bronze powder, cocktail sticks & denta-stone

34W x 66H x 26D CM

2015

ET Phone Home

Bronze and card

2014

Private Collection USA



Studio View

(Photo Jasper Fry)

Every cloud has a silver lining

Pewter and readymade airplane

20H × 18D × 16W CM

2017

Private Collection



EC (Extra-Celestial)

Patinated bronze

26H x 16W x 18D CM

2019



Jumbo

Patinated bronze
9W x 7H x 10D CM
2016



Into the Blue

Patinated bronze
14H x 5W x 6D CM
2019





Doppler

Brass, card, wire, spray paint, copper
and iridescent drinking straws
36W x 26H x 27D CM, 2019
Private Collection



The Dirigible
Lead, brass and wire
42W x 31H x 12D CM, 2014
Private Collection



Out of the Blue
Patinated blue bronze
50W X 30D X 24H CM, 2017

Satellite

3D Print, Humbrol enamel and paper with gilding

12W x 18H x 14D CM

2016



Luna Buggy
Patinated verdigris bronze
48W x 30H x 29D CM
2016
Private Collection





The Towering Crane

Patinated verdigris bronze

55W x 110H x 50D CM

2016

Jumbo

Patinated bronze

9W x 7H x 10D CM

2016

Blimp
Gilded papier-mâché & Tower Bridge
2014



Cryogeyser

Patinated bronze
14 x 9 x 12 CM
2018
Private Collection



Ship Ahoy

Patinated bronze on
London plane lacewood
9H x 11W x 10D CM
2018
Private Collection



Up, Up and Away!

Bronze, paper hot air balloon

40W x 40H x 50D CM

2013

Private Collection



Chair-O-Plane

Kinetic patinated bronze
20W x 34H CM
2019

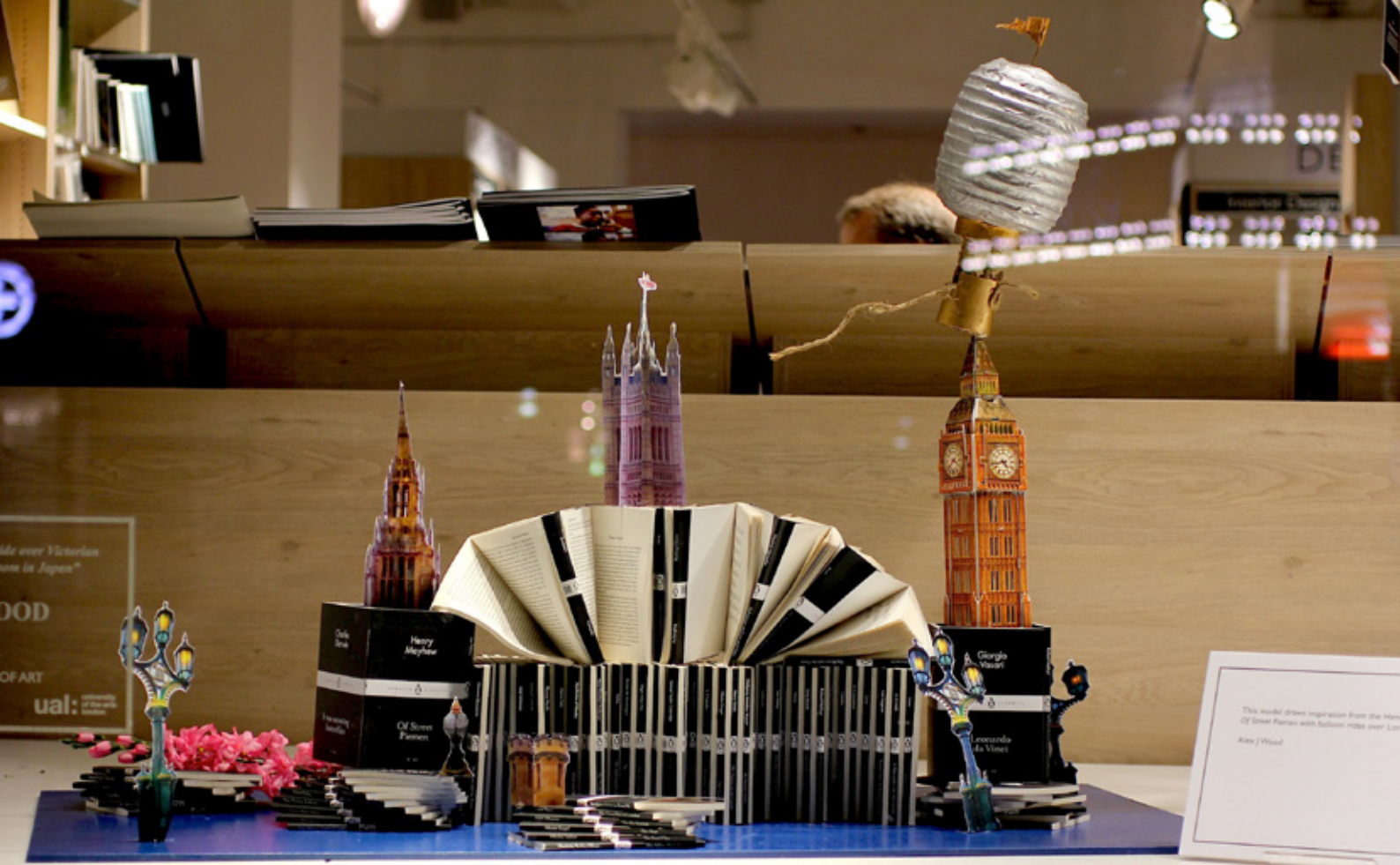


Hidden Depths

Patinated verdigris bronze
45W x 20H x 20D CM
2014

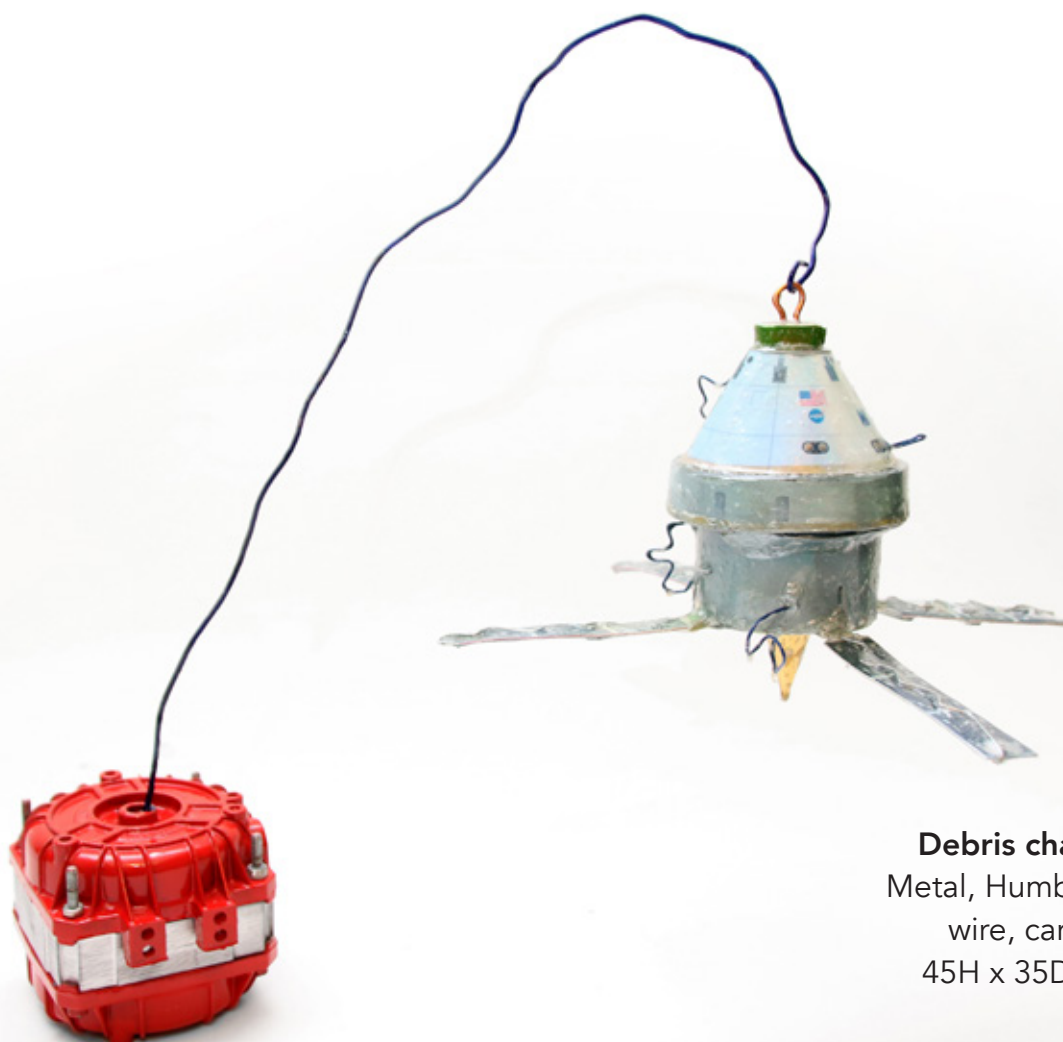
The Patrick & Kelly Lynch Collection USA





"They take us from a balloon ride over Victorian London to a garden of blossom in Japan"
(Of Street Piemen by Henry Mayhew)

Paper, card, bronze powder, twine and Penguin Little Black Classics, 2015
 Commissioned by Penguin Books (Photo courtesy of Giorgio Baldari)



Debris chasing Orion
 Metal, Humbrol enamel,
 wire, card and brass
 45H x 35D x 26W CM
 2017

The First Rocket

Brass, lead, copper and patina

37W x 49H x 18D CM

2015

Private Collection



Cubed Form

Glazed earthenware
35W X 59H X 30D CM
2013





Stetson Cowboy Hat & Stetson Cowboy Hat Installation View
Painted plaster and glazed ceramic Stetson carbonised cowboy hats
Actual Size, 2013





Cubed²
Patinated bronze
2013
Private Collection



Time Flies

Gilded Zeppelin and model Big Ben
40W x 80H x 40D CM
2014



International Space Station
Patinated verdigris bronze
22W x 34H x 18D CM
2014



**Elwetritsches Mondfahrt
Elwetritsche Trip to the Moon!**

Card, brass, wire, enamel paints & lead
2017

The Collection of The Municipality of
Neustadt an der Weinstraße, Germany



Braun's Rocket

Gilded plaster
170H x 45W x 49D CM
2017

The Collection of The Municipality of
Neustadt an der Weinstraße, Germany
(Photo courtesy of Thomas Brenner)

Plinth Towers

Wood, bronze, ceramic and
wax

260W X 420H X 300D CM

2013





The Kraken

Watercolour and ink on paper
35H x 27H CM, 2020. Private Collection



**Crossed Palms
(X Marks the Spot)**

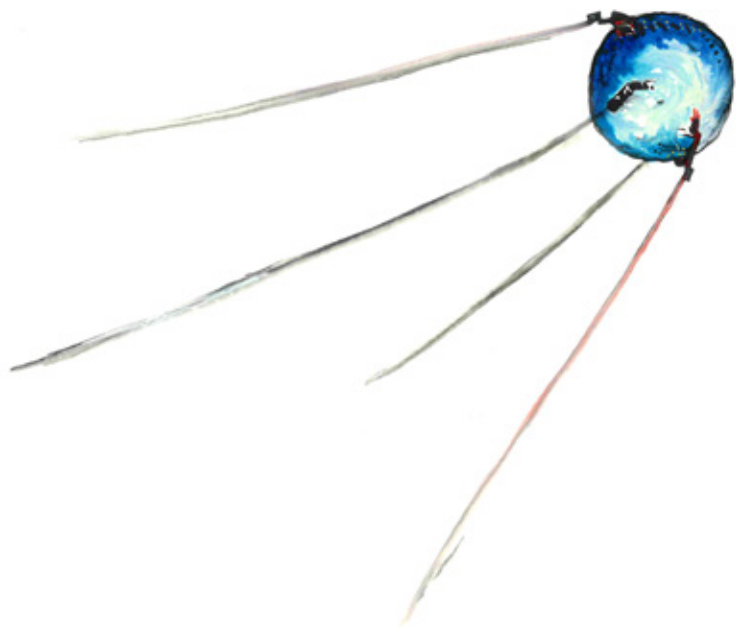
Watercolour and ink on paper
29H x 21H CM, 2020. Private Collection



SPACE SERIES #4 - LUNAR DROID

Watercolour and ink, 20W x 30H CM, 2017

Instagrammed Palms
Watercolour & ink, 30W x 40H CM, 2019



The Collision
Watercolour & ink, 30W x 20H CM, 2019
Private Collection USA



OUT OF THIS WORLD (Bus Number 9 to Aldwych)

Watercolour and ink on paper, 35H x 27W CM, 2020. Private Collection



IN-N-OUT BURGER (Sunset Boulevard)

Watercolour and ink on paper, 29H x 21W CM, 2020. Private Collection



Monument Valley - John Ford Point
Watercolour and ink, 35W x 27H CM, 2020



Monument Valley - The Three Sisters
Watercolour and ink, 35W x 27H CM, 2020

Palm with Satellite

Watercolour and ink on paper, 29H x 21W CM, 2019. Private Collection



The Kraken!

Watercolour and ink on paper, 45H x 35W CM, 2020



Alex J Wood

www.alexjwood.co.uk

info@alexjwood.co.uk



Chair-O-Plane

Watercolour on postcard

10 x 15 CM

2020

Private Collection

B101
Bronze and card model Zeppelin
Private collection

Space Drone

Watercolour on postcard

10 x 15 CM

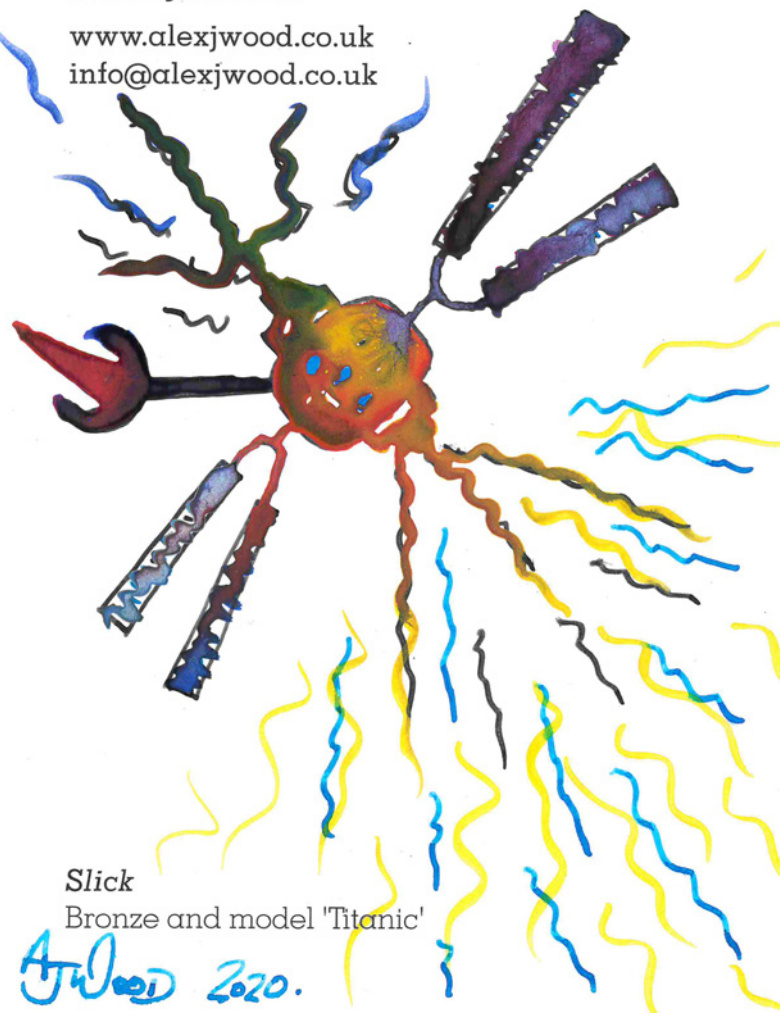
2020

Private Collection

Alex J Wood

www.alexjwood.co.uk

info@alexjwood.co.uk



Slick

Bronze and model 'Titanic'

Alex J Wood 2020.

Alex J Wood

www.alexjwood.co.uk

info@alexjwood.co.uk



Slick
Bronze and model 'Titanic'

2020. Alex J Wood

NASA Saturn Rocket
Watercolour on postcard
10 x 15 CM
2020

Russian Lunar Module
Watercolour on postcard
10 x 15 CM
2020



Alex J Wood

www.alexjwood.co.uk

info@alexjwood.co.uk

R101

Bronze and card model 'Zeppelin'

Private collection

Alex J Wood
2020



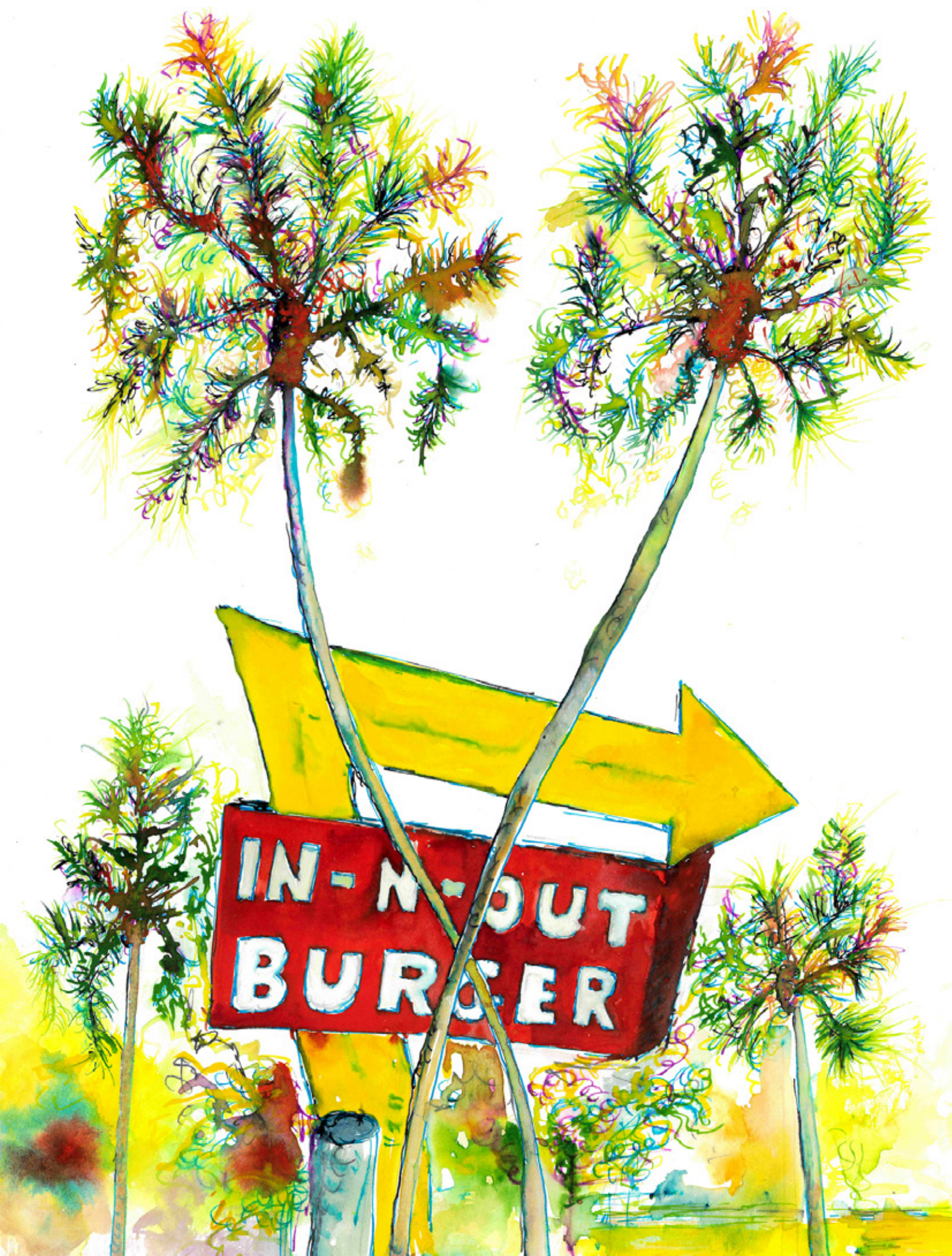
Sputnik Orbiting Palm
Watercolour and ink
20W x 30H CM, 2019



SPACE SERIES #12 - BUGGY

Watercolour and ink, 20W x 30H CM, 2017

IN-N-OUT BURGER (Monterey Bay)
Watercolour and ink on paper, 45H x 33W CM, 2020





Not a Nugget

Gilded porcelain hamburger, actual hamburger size, 2014



The Big Rocket
Acrylic on canvas
20 × 30 CM
2017



The Rocket Garden, Acrylic on canvas, 20 × 30 CM, 2017



Opposite
The Plume
Acrylic on canvas
20W X 30H CM, 2017



MIR
Acrylic on canvas
20W X 30H CM, 2017



Liquefied Hydrogen, Acrylic on canvas, 30 × 40 CM, 2017



STOP - Launchpad 39B, Acrylic on canvas, 20 × 30 CM, 2017



Kerwebaum 2.0 (Christmas tree on a pole!)

Acrylic on board
30 x 40 CM, 2017

Private Collection Germany

London
**Evening
Standard**

FREE www.alexjwood.co.uk

WEST END FINAL

BREXIT ISLAND



AN ISLAND MENTALITY!

EXCLUSIVE Alex Wood Artist

RELATIONS between Downing Street and Brussels plunged further downhill today.

In an exclusive interview with the *Evening Standard*, the front-runner to become Prime Minister showed a flash of steel by insisting on informal discussions first – something that the other 27 EU leaders have refused.

Read more Topical Tropical Stories
on Page 3.

ALEX J WOOD

BIOGRAPHY



British, Born 1988

Lives and works in London and Kent

British, Born 1988

Lives and works in London and Kent

2013 MA Fine Art, Chelsea College of Arts, London

2012 Postgraduate Diploma in Fine Art, Chelsea College of Arts, London

2011 BA (Hons) Fine Art, University of Greenwich, London

Prizes, Awards and Residencies

Arts Council England 'Developing Your Creative Practice' 2019 Grant recipient for research on 'Developing bronze sculpture in combination with 3D printing in a contemporary age'.

The Elizabeth Greenshields Foundation, Canada Grant recipient in 2018, 2017 and 2015

Semi-finalist in The Royal British Society of Artists Rome Scholarship Residency

Shortlisted for The Zealous Emerge Art Prize 2018

Selection panel adviser for University of the Arts London 'Made in Arts' programme

Selected artist in 2017, International Artists Symposium, Neustadt an der Weinstraße, Germany

Winner of The Picton Art Prize 2015, with 'Celestial' a large bronze currently on show in London

Shortlisted for The Mark Tanner Sculpture Award in 2015

Visiting lecturer UAL MA Preparation Course in Beijing in 2014 and resident artist.

2014 Penguin Books Commission for Foyles, 107 Charing Cross Road, London

2014 Foundry Fellow at Camberwell College of Arts London

Awarded 'The Patrick and Kelly Lynch Scholarship' in 2013 whilst at Chelsea College of Arts

Resident artist at Tokyo Wonder Site, Japan in 2013

Collections

The Patrick and Kelly Lynch Collection, University of the Arts London Collection, The Collection of The Municipality of Neustadt an der Weinstraße, Germany and various other collections worldwide.

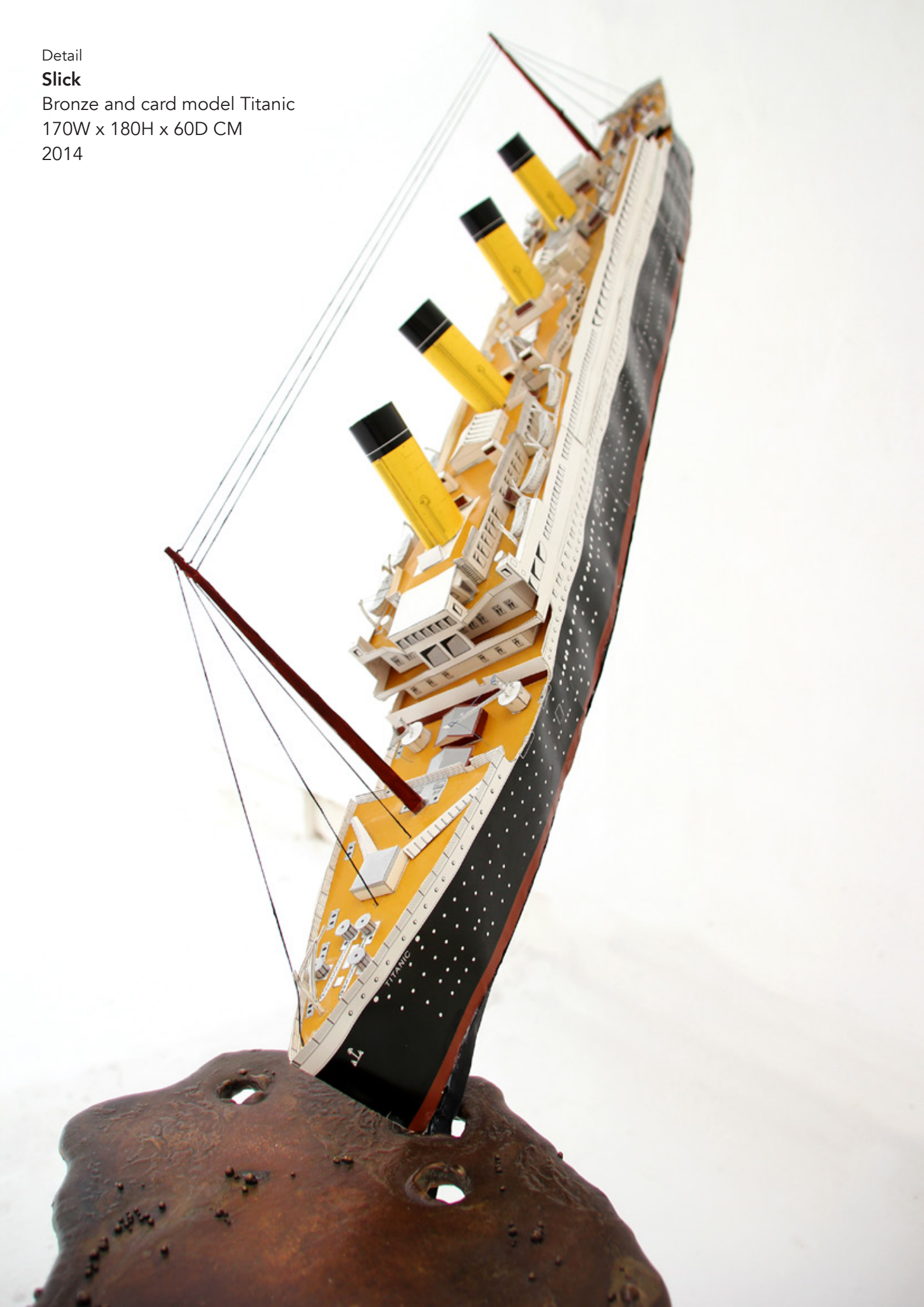
Detail

Slick

Bronze and card model Titanic

170W x 180H x 60D CM

2014



The Plume

Patinated verdigris and Prussian blue bronze

37W x 24H x 25D CM

2015

Private Collection



© 2020 Alex J Wood

All photographs by Alex J Wood
unless otherwise stated

INFO@ALEXJWOOD.CO.UK
WWW.ALEXJWOOD.CO.UK



WWW.ALEXWOOD.CO.UK

Slick
Bronze and card model Titanic
170W x 180H x 60D CM, 2014